



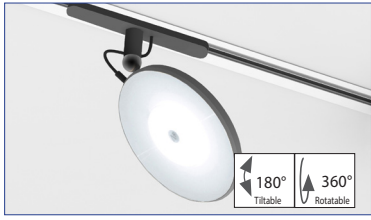
SATTLER

AVVENI 3-PHASE-TRACK



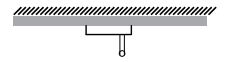
Product-information: One light head with an adapter for a 3-phase track. Light head can be taken off and is fully adjustable through a magnetic hinge system. Light heads are available as flood or spot versions (lenses with 26 and 34 degrees). Cable suspensions are adjustable.

Design: Ulrich Sattler | Michael Schmidt, Code2design



STRUCTURE

Type	L / W mm	L / W mm inches	LED Watt	weight kg ²⁾ / lbs ²⁾	STRUCTURE					
					Type No.	Finish 1	DIM	Power Supply	Mounting Cable	Version
	259 / 184	12.4" / 7.2"	12,5 W	1.0 / 2.2	1113.	XX.	XX.	XX.	XX.	XX.
Finish 1 Structure	14 black matt				XXXX.	14	XX.	XX.	XX.	XX.
Dimmer	DALI-2 ① without Dimming ② CASAMBI ②		Standard Optional		XXXX.	XX.	06. 00. 08.	XX.	XX.	XX.
Power Supply Cable	without power supply cable				XXXX.	XX.	XX.	00	XX.	
Mounting Version	ZA		Standard		XXXX.	XX.	XX.	XX.	ZA.	
					<div style="border: 1px solid orange; padding: 2px; display: inline-block;"> ▶ 00 ZA </div>					



Assembly to 3-phase track
The 3-phase adapter is black

Order No. STRUCTURE

LIGHT HEAD

Type	Finish 2	Finish 3	LED Kelvin	Beam angle	LIGHT HEAD			
					Type No.	Finish 2	Finish 3	
	01	XX.	XX.	XX.	XX.	XX.	XX.	
Finish 2 Light head outside ring	12 white matt RAL 9003	62 (14) black matt	22 aluminum polished		Standard	XX.	12 62 22	XX. XX. XX. XX. XX. XX.
Finish 3 Light head top cover	60 silver anodised	61 gold anodised	62 black anodised		Standard	XX.	XX. 60 61 62	XX. XX. XX. XX. XX. XX.
LED CRI >92	Extra warm-white 2700 K					XX.	XX. 27	XX. XX. XX.
		Warm-white 3000 K				XX.	XX. 30	XX. XX. XX.
		Neutral-white 4000 K				XX.	XX. 40	XX. XX. XX.
Beam Angle						XX.	XX.	XX. XX. XX.
	FLOOD	12,5 W 1282 ¹⁾ Lumen			Standard	XX.	XX.	XX. 99 00 00
	SPOT 26°	12,5 W 1550 ¹⁾ Lumen UGR<19				XX.	XX.	XX. 26 00 00
	SPOT 34°	12,5 W 1550 ¹⁾ Lumen				XX.	XX.	XX. 34 00 00

Order No. LIGHT HEAD FLOOD 00 00

Order No. LIGHT HEAD SPOT 00 00

Order No. Accessories (page 2) ... 00 00 00 ..

Input voltage for all external power supply units and canopies is 220-240 VAC 50-60 Hz

Conforms to UL-STD 1598 Certified to CSA-STD C22.2 No.250.0-08

Protective rating

Tilttable

Rotatable

Light distribution direct

Schutzklasse II Protection class II

Luminaires are suitable for mounting on ordinary flammable materials, which have an inflammation point of at least 200° C. / 392° F.

Technical data is subject to change. Errors and omissions excepted 1) Net lumen output: Losses due to diffusors and reflectors are considered. Lumen values refer to an ambient temperature of max. 35° C / 95° F. 2) Weight of lights without remote technical unit or canopy.

AVVENI

ACCESSORIES

CASAMBI WALL SWITCH



CASAMBI wall-switch

white

207. 00. 00. 00. 11

CASAMBI wall-switch

black

207. 00. 00. 00. 10

Casambi wall-switch is a wireless user interface that can be configured via the Casambi app. The four target buttons can control a scene or an animation of the user's choice or simply one luminaire, one luminaire group or all lights together if so desired. Up to 4 groups may be separately programmed. It comes with a wall mounting plate. The switch can be attached to the plate as it is equipped with magnets.