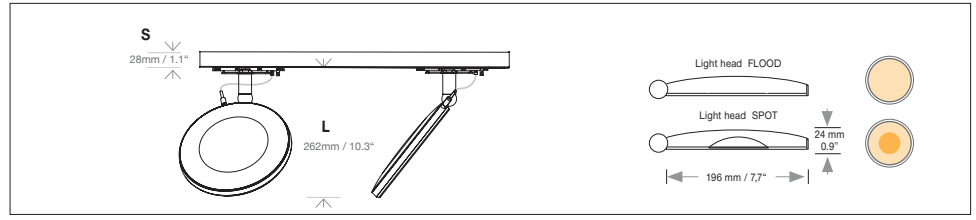
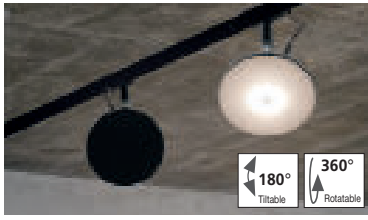


**Product-information:** Spot with adapter for LightLight® system from Buschfeld. Light head can be taken off and is fully adjustable through a magnetic hinge system. Light heads are available as flood or spot versions (lenses with 26 and 34 degrees). Cable suspensions are adjustable.

**Design:** AVVENI: Ulrich Sattler, Michael Schmidt, Code2design | LightLight®: Hans Buschfeld

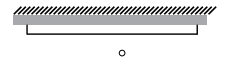
www.sattler-lighting.com



## TRACK ADAPTER

Type	L / S mm	L / S mm inches	LED Watt	weight kg <sup>2)</sup> / lbs <sup>2)</sup>	STRUCTURE				
					Type No.	Finish 1	DIM.	Power Supply Cable	Mounting Version
	262 / 28	103" / 1.1"	12,5	0,5 / 1.1	<b>1153.</b>	XX.	XX.	XX.	XX.
<b>Finish 1</b> Structure	12 white matt RAL 9003	14 black matt	22 aluminium polished		XXXX.	<b>12</b>	XX.	XX.	XX.
					XXXX.	<b>14</b>	XX.	XX.	XX.
					XXXX.	<b>22</b>	XX.	XX.	XX.
<b>Dimmer</b>	without dimmer <b>CASAMBI</b>		<b>Standard</b>		XXXX.	XX.	<b>00</b>	XX.	XX.
					XXXX.	XX.	<b>08</b>	XX.	XX.
<b>Power Supply Cable</b>	power supply cable transparent				XXXX.	XX.	XX.	<b>00</b>	XX.
<b>Mounting Version</b>					XXXX.	XX.	XX.	XX.	<b>00</b>

buschfeld



lightlight®

Design: Hans Buschfeld

**Mounting Version**

Please order mounting version separately

**P**

pend36

**C**

ceiling36

**I**

in36

▶

Order No. STRUCTURE

## LIGHT HEAD

Type	Finish 2	Finish 3	LED	Kelvin	Beam angle	LIGHT HEAD						
						Type No.	Finish 2	Finish 3				
						<b>01</b>	XX.	XX.	XX.	XX.	XX.	XX.
<b>Finish 2</b> Light head outside ring	12 white matt RAL 9003	62 (14) black matt	22 aluminium polished			<b>Standard</b>	XX.	<b>12</b>	XX.	XX.	XX.	XX.
							XX.	<b>62</b>	XX.	XX.	XX.	XX.
							XX.	<b>22</b>	XX.	XX.	XX.	XX.
<b>Finish 2 must be the same as finish 1</b>												
<b>Finish 3</b> Light head top cover	60 silver anodised	61 gold anodised	62 black anodised			<b>Standard</b>	XX.	XX.	<b>60</b>	XX.	XX.	XX.
							XX.	XX.	<b>61</b>	XX.	XX.	XX.
							XX.	XX.	<b>62</b>	XX.	XX.	XX.
<b>LED</b> CRI >92 SELV		<b>Extra warm-white</b> 2700 K	<b>Warm-white</b> 3000 K	<b>Neutral-white</b> 4000 K			XX.	XX.	XX.	<b>27</b>	XX.	XX.
							XX.	XX.	XX.	<b>30</b>	XX.	XX.
							XX.	XX.	XX.	<b>40</b>	XX.	XX.
<b>Beam Angle</b>		<b>FLOOD</b>	<b>12,5 W   1282<sup>1</sup> Lumen</b>			<b>Standard</b>	XX.	XX.	XX.	XX.	<b>99</b>	<b>00 00</b>
	<b>UGR&lt;19</b>	<b>SPOT 26°</b>	<b>12,5 W   1550<sup>1</sup> Lumen</b>				XX.	XX.	XX.	XX.	<b>26</b>	<b>00 00</b>
		<b>SPOT 34°</b>	<b>12,5 W   1550<sup>1</sup> Lumen</b>				XX.	XX.	XX.	XX.	<b>34</b>	<b>00 00</b>

Quantity  Order No. LIGHT HEAD FLOOD ▶

Quantity  Order No. LIGHT HEAD SPOT ▶

Flood and spot heads may be mixed within one structure

Quantity  Order No. Accessories (page 2) ▶

Input voltage for all external power supply units and canopies is 220-240 VAC 50-60 Hz

Handcrafted in Germany, certified quality

**IP 20** Protective rating

**180°** Tilttable

**360°** Rotatable

Light distribution direct

Protection class III: only suitable for very low voltage supply (<50V)

Luminaires are suitable for mounting on ordinary flammable materials, which have an inflammation point of at least 200° C. / 392° F.

Technical data is subject to change. Errors and omissions excepted 1) Net lumen output: Losses due to diffusers and reflectors are considered. Lumen values refer to an ambient temperature of max. 35° Celsius / 95° Fahrenheit. 2) Weight of lights without remote technical unit or canopy.

06.06.23 AVVENI lightlight® Track system

### CASAMBI WALL SWITCH



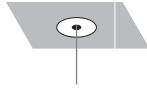
CASAMBI wall-switch  
CASAMBI wall-switch

white  
black

**207. 00. 00. 00. 11**  
**207. 00. 00. 00. 10**

Casambi wall-switch is a wireless user interface that can be configured via the Casambi app. The four target buttons can control a scene or an animation of the user's choice or simply one luminaire, one luminaire group or all lights together if so desired. Up to 4 groups may be separately programmed. It comes with a wall mounting plate. The switch can be attached to the plate as it is equipped with magnets.

### Ceiling Fixation



Consisting of a cavity ceiling box with 80mm round metal cover.  
**Applicable to mounting version B.**

white

**200. 00. 00. 00. 11**