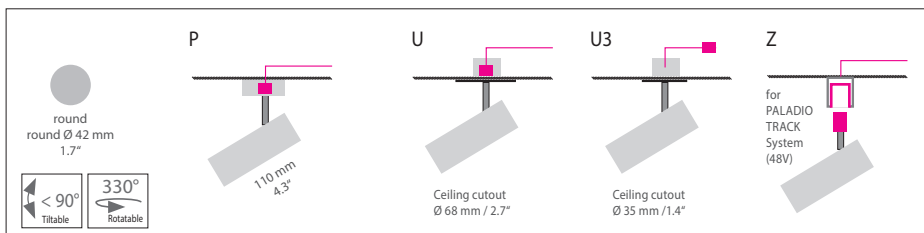
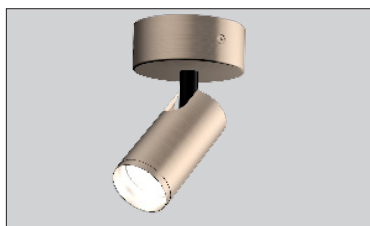


EVOLUTION

SPOT S

Housing: Spotlight, solid aluminium housing, 330° hinge, 24° and 38°

Design: Ulrich Sattler



	Size: Ø / L mm	Inches	LED Watt	Lumen ¹⁾	Weight ²⁾ kg/lbs	Beam angle	Item No.	LED direct	Dimming	LED indirect	Finish	Power supply cable	Mounting version
Size	Ø 42 / L 110 mm	Ø 1.7 / L 4.3"	6,8	625	0,4 / 0.88	24°	1787.	XX.	XX.	XX.	XX.	XX X.	X
	Ø 42 / L 110 mm	Ø 1.7 / L 4.3"	6,8	625	0,4 / 0.86	38°	1788.	XX.	XX.	XX.	XX.	XX X.	X
LED		Standard: Warm-white		3000 K			XXX.	30.	XX.	XX.	XX.	XXX.	X
CRI > 90		Optional: Neutral-white		4000 K			XXX.	40.	XX.	XX.	XX.	XXX.	X
UGR<19		Extra warm-white		2700 K			XXX.	27.	XX.	XX.	XX.	XXX.	X
L80 B10 50.000 h													
SELV													
Dimming		Standard: TRIAC					XXX.	11.	XX.	00.	XX.	XXX.	X
		DALI					XXX.	61.	XX.	00.	XX.	XXX.	X
		Optional: DALI					XXX.	61.	XX.	00.	XX.	XXX.	X
		Casambi					XXX.	81.	XX.	00.	XX.	XXX.	X
Finish		Standard: 66 bronze anodised brushed	Optional: 60 silver anodised brushed	62 black anodised brushed	65 champ. gold anodised brushed	12 white, powder coated, similar RAL 9003	XXX.	XX.	XX.	XX.	---	XXX.	X
Mounting version		Standard: Direct ceiling mounting with power supply unit in canopy	Optional: U Cover Ø 80 mm / 3.1" Ceiling cutout 68 mm / 2.7" Power supply unit in cavity box	U3 Cover Ø 50mm / 2.0" 3) Ceiling cutout 35 mm / 1.4" Power supply unit in suspended ceiling	Z Mounting with adapter for 48V PALADIO TRACK System		XXX.	XX.	XX.	XX.	XX.	XXX.	-
				*mounting version U3 available from the 1st quarter of 2021									

Canopy:		
Type	For use with Mounting version	Protective rating
 DA 50 Cover Ø 50mm / 2.0" Ceiling cutout 35 mm / 1.4" Power supply unit in suspended ceiling same colour as luminaire 3) an inspection flap is required for the power supply unit	U3	IP 40
 DA 80 Cover Ø 80mm / 3.1" Ceiling cutout 68 mm / 2.7" Power supply unit in cavity box same colour as luminaire	U	IP 40
 DB 78/32 Cover Ø 78mm / 3.0" H 32 mm / 1.2" same colour as luminaire	P	IP 40

Complete order number: ---, --, --, 00, --, 000, --

Compatible TRIAC Dimmers

Manufacturer	Model	Quantity of parallel connection
JUNG	1224 LED UDE	14
JUNG	1731 DD	10
Merten	SBD200LED	13
ABB Busch-Jaeger	6519 U	15
ABB Busch-Jaeger	6526 U	13
Berker	296110	10
Berker	2973	12
Schneider	SBD200LED_ELG174231	13

Input voltage for all external power supply unit is 220-240 VAC 50/60 Hz



Handcrafted in Germany, certified quality



Protective rating of luminaire



Direct light distribution



Protection class II



Luminaires are suitable for mounting on ordinary flammable materials, which have an inflammation point of at least 200° C / 392° F