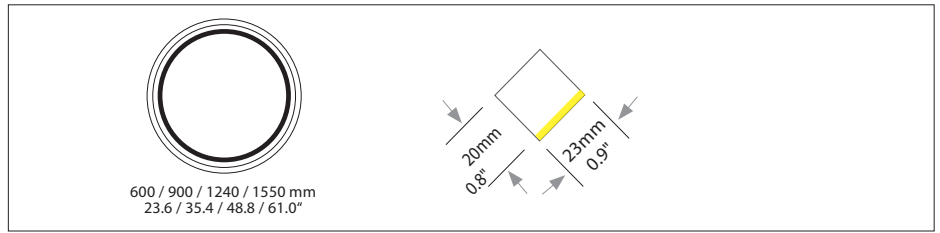
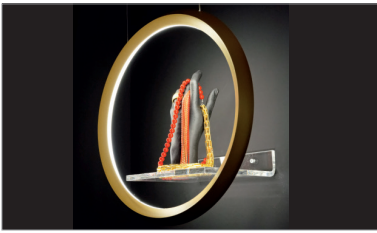


GIRATA

Vertical

Housing: Circular aluminium profile bent inwards 45°. Integrated opal diffuser.
Design: MARKUS BISCHOF



Size: Ø mm	Inches	LED Watt	Lumen ¹⁾	Weight ²⁾ kg/lbs	Item No.	LED	Dimming	LED	Finish	Power supply cable	Mounting version	
Ø 600 mm	23.6"	32	1.894	3.0 / 6.6	901.	xx.	xx.	xx.	xx.	xxx.	x	
Ø 900 mm	35.4"	54	3.178	3.5 / 7.7	902.	xx.	xx.	xx.	xx.	xxx.	x	
Ø 1240 mm	48.8"	70	4.104	5.0 / 11.0	903.	xx.	xx.	xx.	xx.	xxx.	x	
Ø 1550 mm	61.0"	89	5.190	5.5 / 12.1	904.	xx.	xx.	xx.	xx.	xxx.	x	
LED <small>CRI > 90 Mac Adam 3 SELV L80 B10 100.000 h</small>		Standard: Warm-white	3000 K		xxx.	30.	xx.	xx.	xx.	xxx.	x	
		Optional: Neutral-white Extra warm-white	4000 K 2700 K		xxx. xxx.	40. 27.	xx. xx.	xx. xx.	xx. xx.	xxx. xxx.	x x	
Dimming		Standard: Without Dimmer			xxx.	xx.	01.	00.	xx.	xxx.	x	
		Optional: 0 - 10 V DALI CASAMBI			xxx. xxx. xxx.	xx. xx. xx.	51. 61. 81.	00. 00. 00.	xx. xx. xx.	xxx. xxx. xxx.	x x x	
Finish	Standard: 12 white, powder coated, similar RAL 9003	Optional (Powder coated):	11 white, similar RAL 9010	10 black fine textured	30 anthracite fine textured	33 sand silver fine textured	34 bronze satined	Optional (Premium):	22 aluminium polished	27 brush-finished aluminium	XX Custom finish	
			35 gold	36 brass	37 bronze fine textured	38 copper	xxx.					xx.
Power supply cable	Standard: Z 70 Silver	Optional:	Z 71 white	Z 72 grey	Z 73 black	Without power cable 000 Current-carrying F, R	xxx.	xx.	xx.	xx.	xx.	
			Z 74 orange	Z 75 red	Z 76 green							



Handcrafted in Germany, certified quality



Conforms to UL-STD 1598 Certified to CSA-STD C22.2 No.250.0-08



Protective rating of luminaire



Light distribution inwards



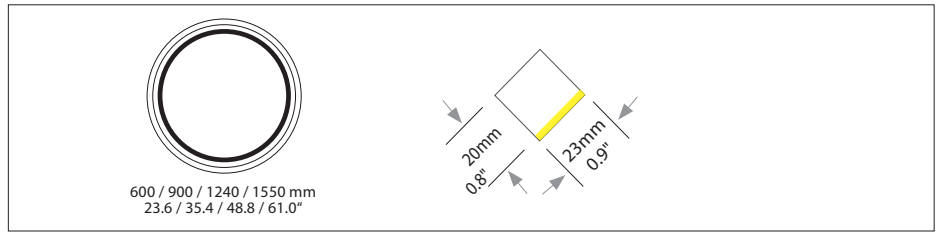
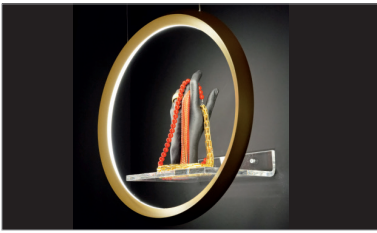
Protection class III: only suitable for very low voltage supply (<50V)



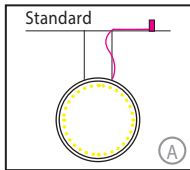
Luminaires are suitable for mounting on ordinary flammable materials, which have an inflammation point of at least 200° C. / 392° F.

GIRATA Vertical

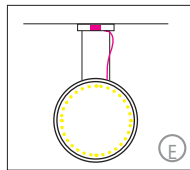
Housing: Circular aluminium profile bent inwards 45°. Integrated opal diffuser.
Design: MARKUS BISCHOF



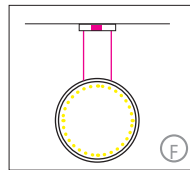
Mounting version



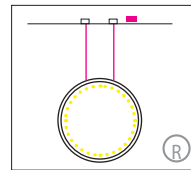
2 point suspension, with external power supply unit in suspended ceiling



Suspension through canopy



Current-carrying steel cables.



Suspension with current-carrying steel cables and cavity wall box.

Item No.	LED	Dimming	LED	Finish	Power supply cable	Mounting version
X X X.	X X.	X X.	X X.	X X.	X X X	-

A, R = Distance of external power supply unit to light fixture max. 10m / 394".

Including steel cable suspension 3000mm/118" and/or power supply cable 3000mm/118"



---	---	---	---	---	---	---
-----	-----	-----	-----	-----	-----	-----

Complete order number

Type / Size mm / inch L x W x H	For use with Mounting version	Protective rating
DE 1F 363 x 143 x 56 mm / 14.2 x 5.6 x 2.2"	A,R	IP 20

Input voltage for all external power supply units and canopy is 220-240 VAC 50-60 Hz

Type / Size mm / inch Ø cover plate / body / H	For use with Mounting version	Protective rating
DBL 390 L 390 x B 70 x H 70 mm L 15.3 x B 2.7 x H 2.7"	E, F (up to Ø 1240 mm)	IP 10
DBL 490 L 490 x B 70 x H 70 mm L 19.4 x B 2.7 x H 2.7"	E, F (up to Ø 1240 mm)	IP 10

Colour: 12 white, similar RAL 9003, contact factory for other finishes
USA/Canada: Canopy mounts to 4" octagonal junction box.

Optional

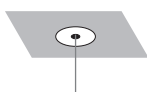


CASAMBI wall-switch

Casambi wall-switch is a wireless user interface that can be configured via the Casambi app. The four target buttons can control a scene or an animation of the user's choice or simply one luminaire, one luminaire group or all lights together if so desired. Up to 4 groups may be separately programmed. It comes with a wall mounting plate. The switch may be also used on its own as it is attached to the wall plate using magnets.

207. 00. 00. 00. 12. (white)

207. 00. 00. 00. 10 (black)



Power cable cover plate for mounting version A

Consisting of a cavity ceiling box with 80mm round metal cover. Applicable to mounting version A.

200. 00. 00. 00. 12 (white)



Handcrafted in Germany, certified quality



Conforms to UL-STD 1598 Certified to CSA-STD C22.2 No.250.0-08



IP 50 Protective rating of luminaire



Light distribution inwards



Protection class III: only suitable for very low voltage supply (<50V)



Luminaires are suitable for mounting on ordinary flammable materials, which have an inflammation point of at least 200° C. / 392° F.